

# Color



**Color: Any allowed hound color. Merle and brindle colors patterns are not acceptable and shall be disqualified.** --AKC Standard (effective July 30, 2024) “Any hound color” is understood to mean the traditional foxhound type colors- tricolors, bi-colors, and peds; as well as variations and dilutes of these colors. **It is NOT required that the “points” (feet, and tip of tail) of the beagle be white.**

**ALL OF THESE COLORATIONS ARE EQUALLY ACCEPTABLE**

**A tri color** may be black/white/tan, liver(chocolate)/white/tan, blue/white/tan or Isabella(lilac)/tan/white. The Tri’s may have rich dark blankets or faded blankets. The tricolors may have the typical “saddle” pattern or be opened marked.

**A bi-color’s** intensity of the red may range from red, tan, lemon or fawn.



# Color... continued

**Pieds** have hairs with two colors. The tip of the hair is black. The range of the pied (black hairs) on the body can be from a stripe on the back to the full side of the body. You can always tell a pied by the typical nose, the rims darker and the center part paler. Some call it a dudley nose or butterfly nose.

**Ticking** on a beagle may vary from light to heavy.

**REMEMBER--JUDGE THE STRUCTURE NOT THE  
COLOR!**

# Color



Classic Tri



Faded Tri



Faded Tri



Blue Faded Tri



# Color



Red and white



Tan and white



Lemon and white



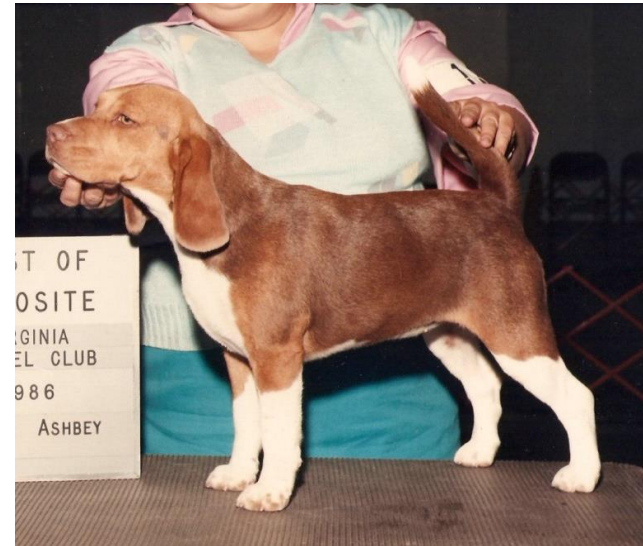
Badgered Pied -(note nose color)



# MORE ACCEPTABLE COLORS



Lilac (Isabella) Tri (Chocolate with Blue factor)



Liver or chocolate tri



Black/white and tan tri "Ticked" (Mottle)



Open marked tri



Blue tri color (faded)

Black tri color (not faded)

Blue Tri color (not faded)

# Merle and Brindle Coat Patterns



Merle or Brindle are color patterns that have never been known to exist in beagles. To maintain the integrity of the breed, the National Beagle Club of America voted to make the merle and brindle color patterns a DQ in the standard.

